

Beaumont

Connecting Your Personal Computer to Citrix

System Requirements

This Tech Tip is intended for Beaumont users running:

- Microsoft Windows (7, 8.x, 10+)
- Apple MacOS (10.11+)

Preferred Browsers:

- Internet Explorer 11
- Microsoft Edge (Latest release)
- Google Chrome (Latest release)

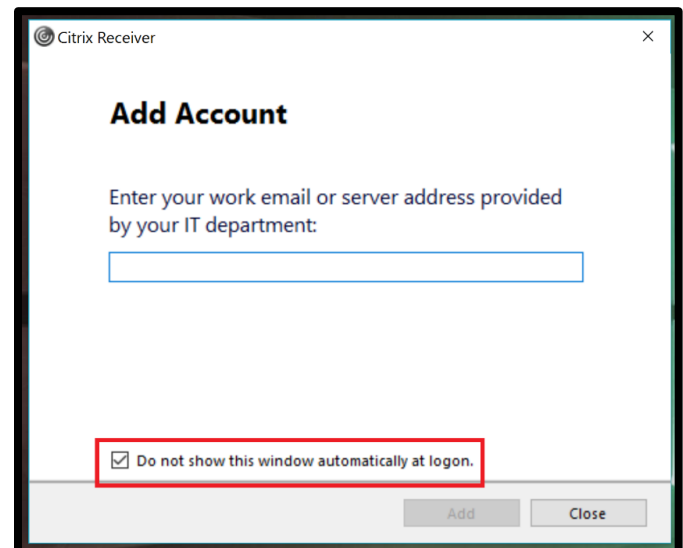
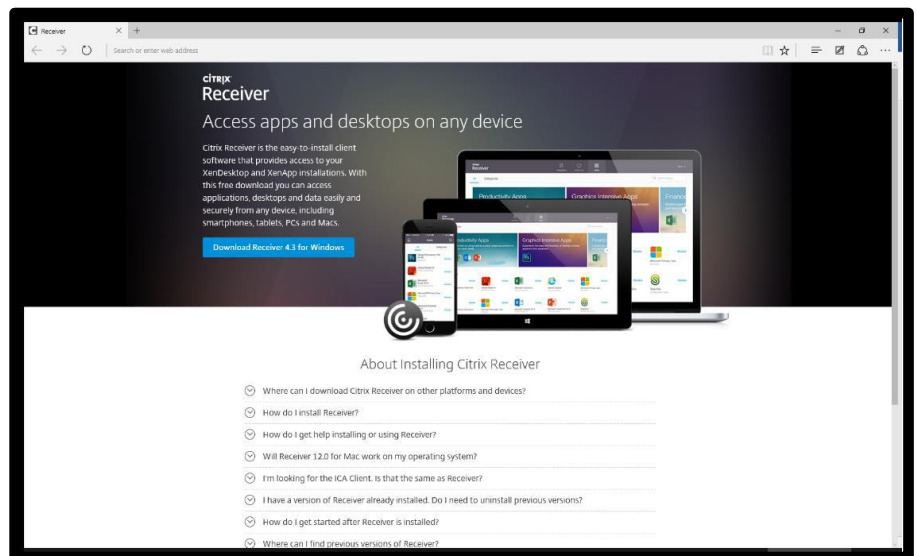
Untested Browsers:

- Mozilla Firefox
- Apple Safari
- Opera
- Vivaldi

Note: Support by Beaumont Health IT is not guaranteed on untested browsers. For the best possible experience, please use a preferred browser.

Download Citrix Receiver

1. Open a web browser and navigate to <http://citrix.receiver.com>
2. Click on the blue **Download Receiver** button
3. Install the downloaded package, with all of the default options selected.
4. Restart your computer to insure a clean install.
5. After restarting, you should see this prompt, on the right. Select **“Do not show this window automatically at logon.”** and click **Close**.



Navigating to bhapps.beaumont.org

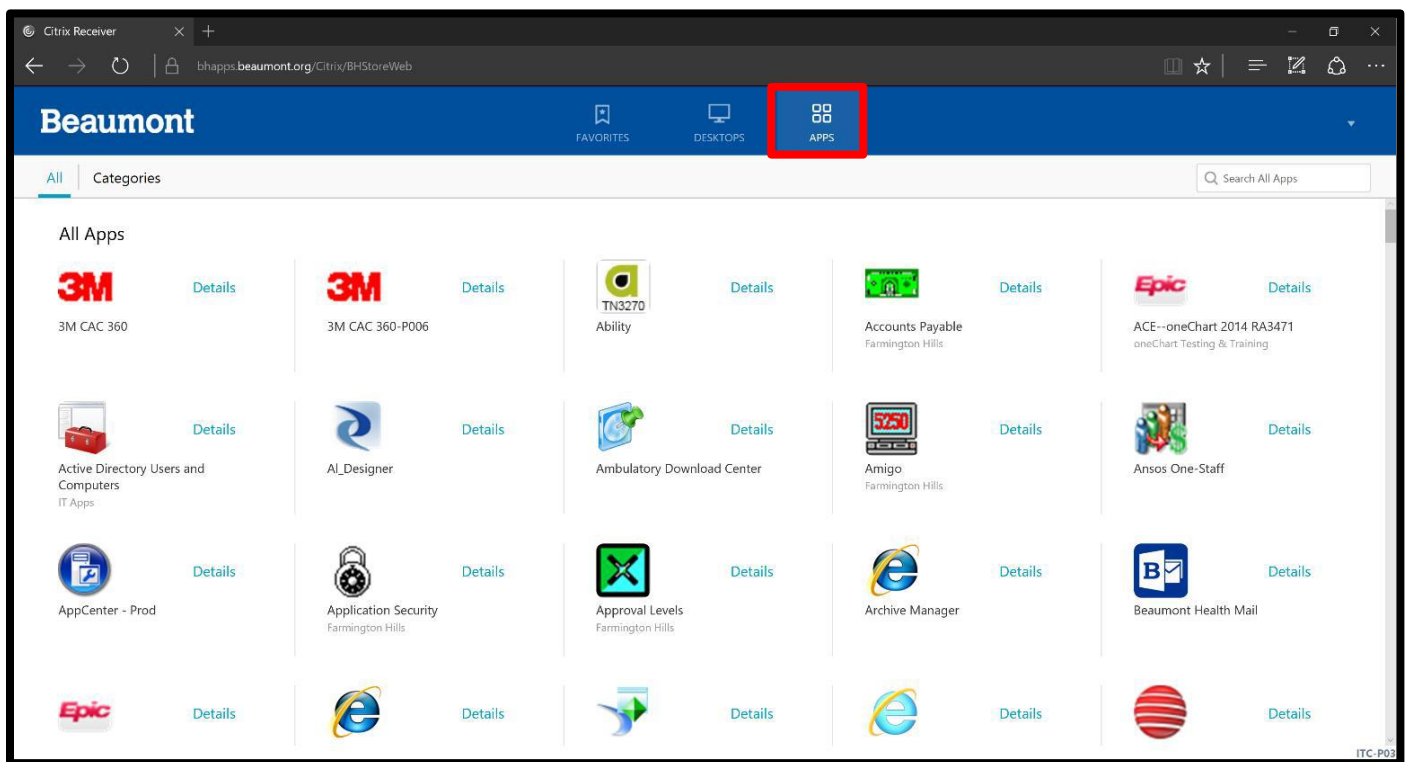
Connecting to your published applications (i.e., OneChart OneContact) can be accomplished by browsing to the correct Storefront address.

1. Open a preferred web browser and navigate to <https://bhapps.beaumont.org>
2. Enter your Beaumont workstation user name and password.
3. Click "Log On".

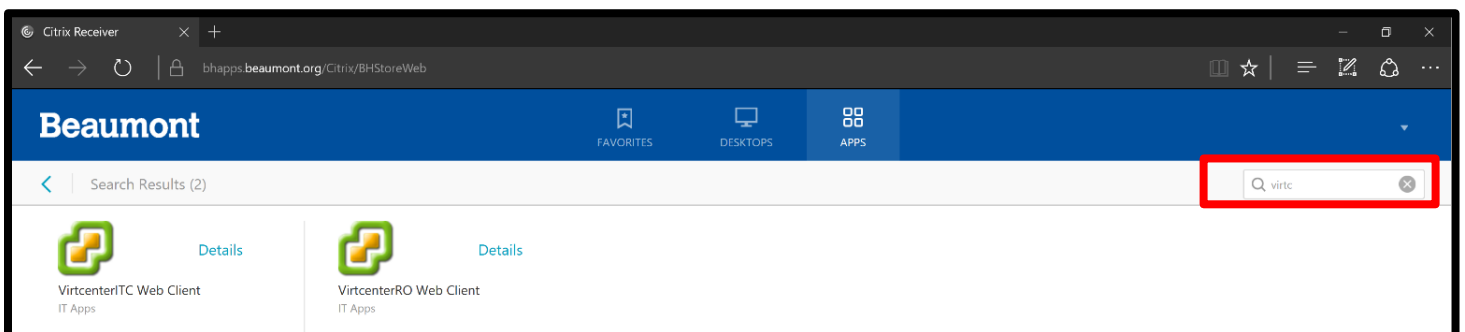
Adding Your Most Commonly Used Apps to Your Favorites

When you log into <https://bhapps.beaumont.org>, you will be on the Favorites tab. However, this may not have all of the apps that you use. They can be found under the Apps tab.

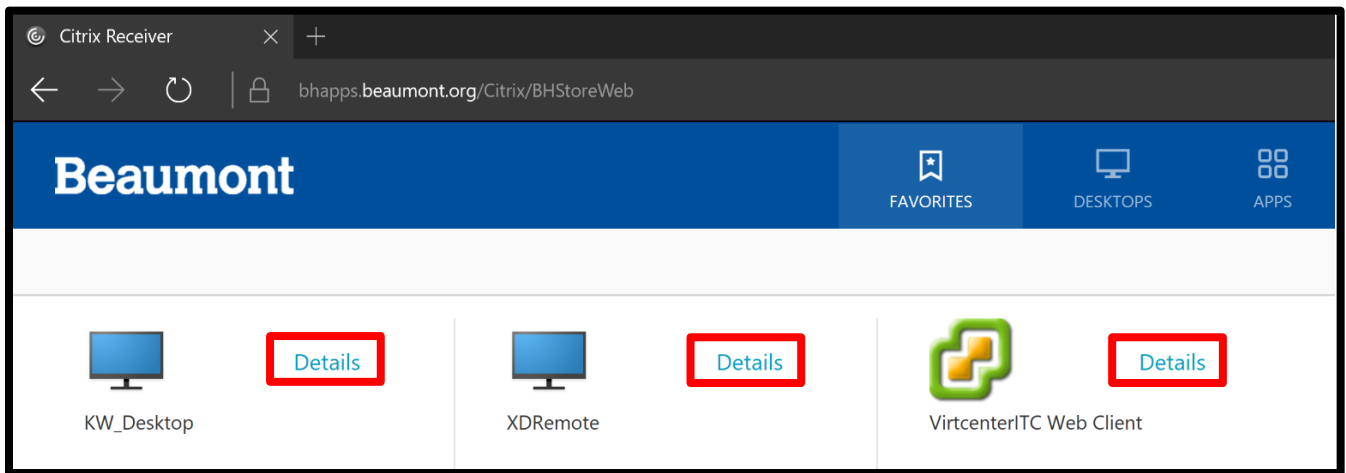
1. Click on the **Apps** tab, in the blue header on the top of the page.



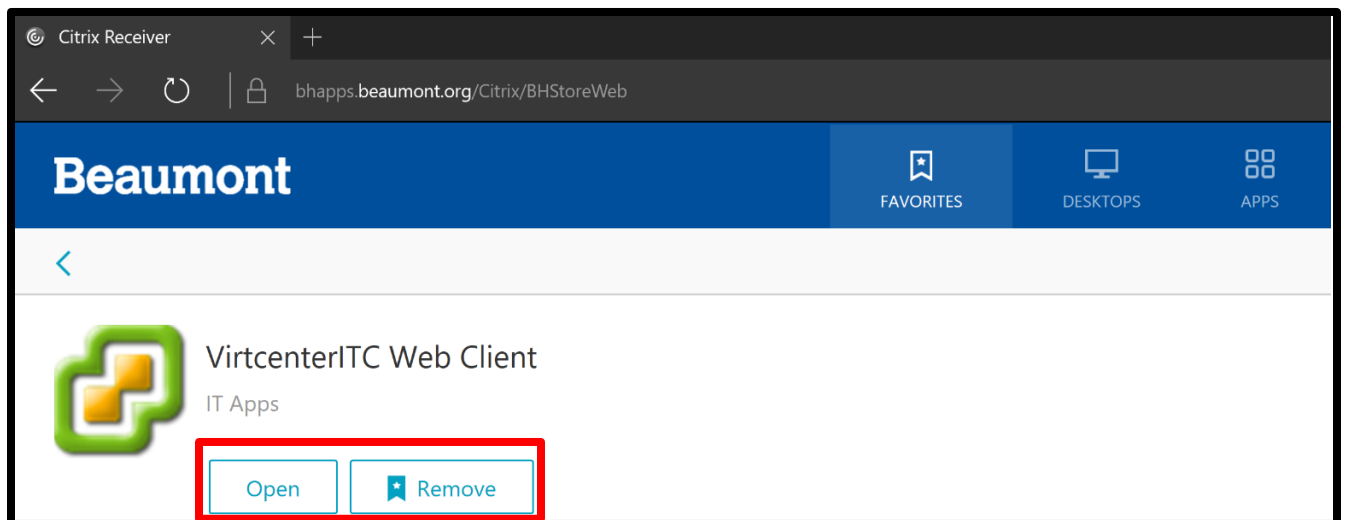
2. Use the search field to search for your app. You don't have to hit 'Enter', just **start typing the name of your app** and it will filter to the top. Alternatively, you can scroll down and find your app manually.



3. Click on the blue **Details**, and then **Add to Favorites**. This process also applies for VDIs, as shown below:



4. Removing an application from the Favorites tab follows the same process: Simply click on: 'Details' and then 'Remove'. The application will still be available in the Apps tab.



Help

Note: This document is for accessing Beaumont Apps from your personal PC. For instructions on accessing bhapps.beaumont.org on a workstation or mobile device, reference those appropriate documents.



Contact the Beaumont IT Service Desk:



By telephone at: 1-888-481-2448

By email at helpdesk@beaumont.org